

Model 20 Actuator - less Coupler

20,000 pound capacity, G.V.W.R., 2,000 pound tongue load



Part No. Primed	Part No. Plated	Brake Type	Standard or Non-Standard	Weight	Pallet Qty.	Master Cyl.	Master Cyl. Assy. Kits	CPLR Repair Kit	Description
1055100		Drum	STD	65	18	23744	10187		Weld-On
4749700		Disc	STD	65	18	47471	47495-00		Weld-On

Model 20 Actuator Straight with Lunette Eye

20,000 pound capacity, G.V.W.R., 2,000 pound tongue load



Part No. Primed	Part No. Plated	Brake Type	Standard or Non-Standard	Weight	Pallet Qty.	Master Cyl.	Master Cyl. Assy. Kits	CPLR Repair Kit	Description
1297400		Drum	STD	79	15	23744	10187		L-Eye Weld-On

Model 20 Actuator Straight with 2-5/16 Ball Coupler

20,000 pound capacity, G.V.W.R., 2,000 pound tongue load



Part No. Primed	Part No. Plated	Brake Type	Standard or Non-Standard	Weight	Pallet Qty.	Master Cyl.	Master Cyl. Assy. Kits	CPLR Repair Kit	Description
1521000		Drum	STD	74	15	23744	10187	18487	2 ⁵ / ₁₆ CPLR Weld-On
4750500		Disc	STD	74	15	47471	47495-00		2 ⁵ / ₁₆ CPLR Weld-On

Model 20 Actuator - 2-5/16 Drop Coupler

20,000 pound capacity, G.V.W.R., 1,200 pound tongue load

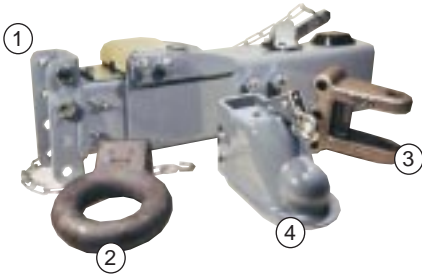


Part No. Primed	Part No. Plated	Brake Type	Standard or Non-Standard	Weight	Pallet Qty.	Master Cyl.	Master Cyl. Assy. Kits	CPLR Repair Kit	Description
1735100		Drum	*NON-STD	76	12	23744	10187	18487	2 ⁵ / ₁₆ CPLR Weld-On

*Non-Standard Actuators require minimum 8-week lead time and minimum order quantity may be required.

Model 20 Actuator with Leveler Channel

12,000 pound capacity, G.V.W.R., 1,200 pound tongue load



	Part No. Primed	Part No. Plated	Brake Type	Standard or Non-Standard	Weight	Pallet Qty.	Master Cyl.	Master Cyl. Assy. Kits	CPLR Repair Kit	Description
④	1889800		Drum	STD	82	15	23744	10187	18487	w/18820 2 ⁵ / ₁₆ CPLR
④	4750000		Disc	STD	82	15	47471	47495-00		w/18820 2 ⁵ / ₁₆ CPLR
②	1777800		Drum	STD	82	15	23744	10187		w/16137 Lunette Eye
②	4750100		Disc	STD	82	15	47471	47495-01		w/16137 Lunette Eye

20,000 pound capacity, G.V.W.R., 2,000 pound tongue load

	Part No. Primed	Part No. Plated	Brake Type	Standard or Non-Standard	Weight	Pallet Qty.	Master Cyl.	Master Cyl. Assy. Kits	CPLR Repair Kit	Description
①	1899100		Drum	STD	70	15	23744	10187		Basic ACT Only
①	4749800		Disc	STD	70	15	47471	47495-01		Basic ACT Only
③	1811700		Drum	STD	81	15	23744	10187		w/18078 Clevis Hitch
③	4749900		Disc	STD	81	15	47471	47495-01		w/18078 Clevis Hitch

Model 20 Actuator - 2-5/16 Drop Coupler with Mounting Channel

20,000 pound capacity, GVWR., 2,000 pound tongue load



	Part No. Primed	Part No. Plated	Brake Type	Standard or Non-Standard	Weight	Pallet Qty.	Master Cyl.	Master Cyl. Assy. Kits	CPLR Repair Kit	Description
		4042700	Drum	STD	80	12	23744	10187	18487	2 ⁵ / ₁₆ CPLR Bolt-On
		4750700	Disc	STD	80	12	47471	47495-01042		2 ⁵ / ₁₆ CPLR Bolt-On

Model 20 Actuator - 2-5/16 Straight with Mounting Channel

20,000 pound capacity, GVWR., 2,000 pound tongue load

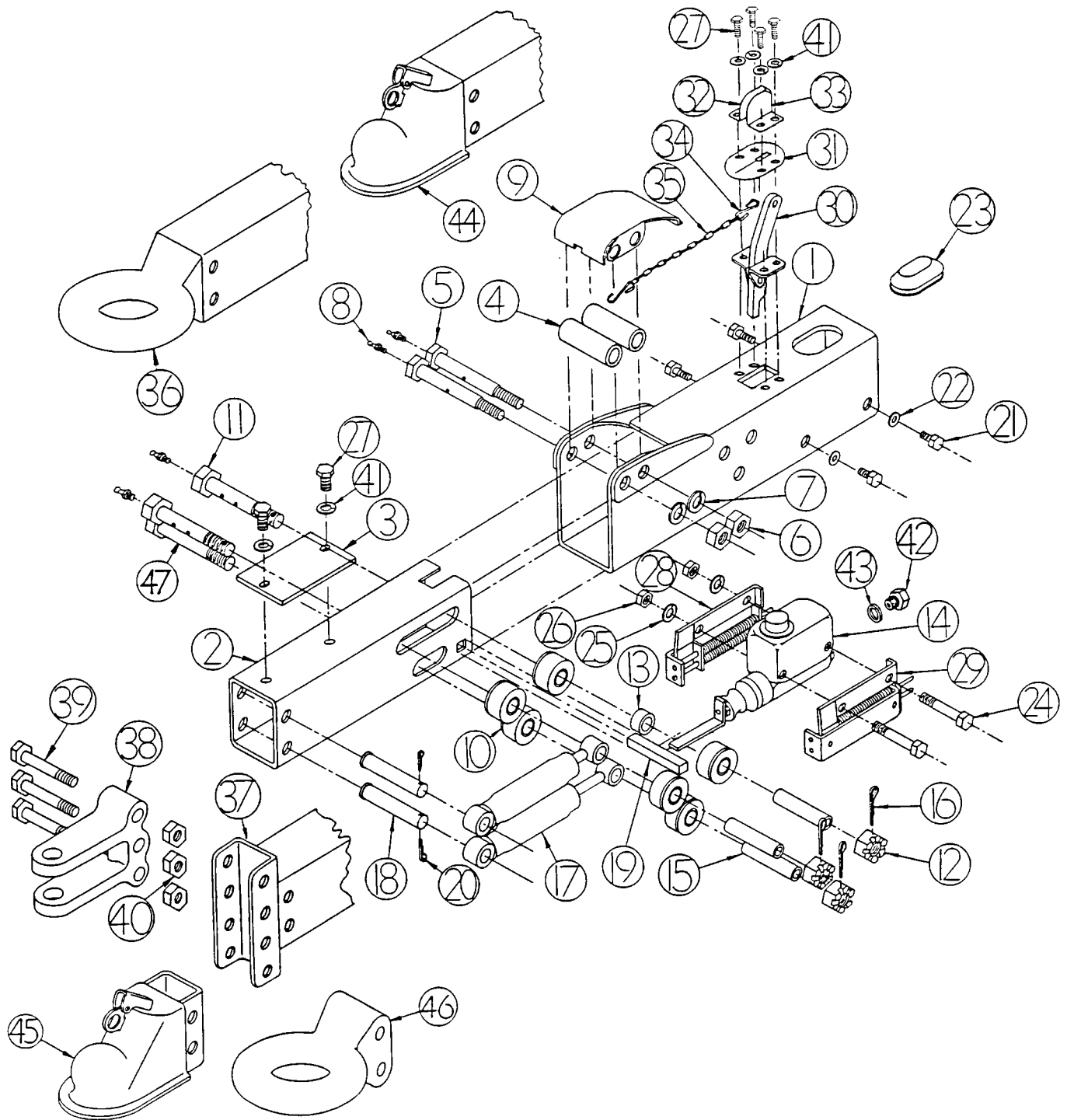


	Part No. Primed	Part No. Plated	Brake Type	Standard or Non-Standard	Weight	Pallet Qty.	Master Cyl.	Master Cyl. Assy. Kits	CPLR Repair Kit	Description
		4053400	Drum	*NON-STD	78	12	23744	10187	18487	2 ⁵ / ₁₆ CPLR Bolt-On

NOTE: Padlock (Master Lock #30) works with a 2⁵/₁₆" Ball Coupler.

*Non-Standard Actuators require minimum 8-week lead time and minimum order quantity may be required.

MODEL 20 ACTUATOR PARTS DIAGRAM





(REFER TO DIAGRAM ON PAGE 35)

MODEL 20 ACTUATOR PARTS LIST

KEY NO.	PART NO.	DESCRIPTION	KEY NO.	PART NO.	DESCRIPTION
1	1055300	Outer Case Assembly - Primer	25	1255200	GR 5, Zinc STAR Lockwasher 3/8"
1	1734900	Outer Case Assembly w/Mounting Channel - Primer	26	0797600	Hex Nut 3/8 NC
1	4488300	Outer Case Assembly w/Mounting Channel - Plated	27	0794900	HX HD Capscrew 5/16x5/8 NC, GR 5, Zinc
2	1556300	Inner Slide Assembly - No Coupler	28	0838800	RH Cylinder Bracket Assembly
2	1735000	Inner Slide Assembly w/2-5/16" Drop Coupler	29	0838900	LH Cylinder Bracket Assembly
2	4490400	Inner Slide Assembly w/2-5/16" Drop Coupler - Plated	30	1054100	Breakaway Lever Assembly
3	0828400	Centering Rail	31	1055200	Weather Seal
4	1601900	Front Roller - Plated	32	1052700	RH Breakaway Lock - Plated
5	0828800	Front Roller Bolt 5/8x5.25-1/2 NC	33	1052600	LH Breakaway Lock - Plated
6	0798500	Hex Nut 1/2 NC	34	1055500	S-Hook
7	0793700	Lockwasher 1/2" STD	35	0776800	Safety Chain
8	0144901	Zerk 35/64	36	1297600	Inner Slide Assembly w/ 3" Lunette Eye
9	0828900	Front Roller Cover	37	1058200	Inner Slide Assembly w/Leveler Channel
9	0828925	Front Roller Cover - Plated	38	1807800	Clevis Hitch, For 1" Pin
10	0829100	Rear Roller	39	0909300	HHCS 5/8x4.5 NC, GR 5, Zinc
11	0829400	Roller Bolt 5/8x5 NF, GR 5	40	1040500	Locknut 5/8 NC
12	0797100	Slotted Hex Nut 5/8 NC	41	0793800	Lockwasher 5/16" STD
13	0332800	Spacer	42	1209900	Connector Drum Brake
14	1250300	Filler Cap (Included in 23744)	42	4750200, 4750300	Connector Disc Brake
14	2374400	Master Cylinder Assembly, 1-1/4" Bore (drum)	43	0774500	Gasket
14	4747100	Master Cylinder Assy. (disc)	44	1278800	Inner Slide Assembly w/2-5/16" Coupler - Primer
14		Push Rod Bracket Assembly (Included in 23744)	44	4488400	Inner Slide Assembly w/2-5/16" Coupler - Plated
15	0829700	Spacer	45	1882000	Adjustable Ball Coupler - 2-5/16"
16	0799700	Cotter Pin-1/8x1.00	46	1613700	Lunette Eye - 3" Adjustable
17	0778400	Damper	47	0829500	HX HD Screw 5/8x5 NF, GR 5
18	0829800	Damper Bar		1018700	1-1/4" Master Cylinder Repair Kit Drum Brake
19	0830100	Pushrod Block		1848700	2-5/16" Ball Coupler Repair Kit
20	0799700	Cotter Pin-1/8x3/4		2402900	Model 20 I&I Manual
21	0794800	HX HD Capscrew 5/16x1/2 NC, GR 5, Zinc		4823800	Master Cylinder Repair Kit Disc Brake
22	1248900	Star Lockwasher 5/16"			
23	1507000	Cylinder Cover			
24	0827100	HX HD Capscrew 3/8x3 NC,			