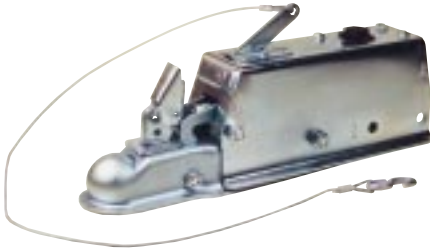


Model 60 Leverlock Actuator

6,000 pound capacity, Max. G.V.W.R., 600 pound tongue load
G.V.W.R. limited to ball rating.



Part No. Primed Non-Standard	Part No. Plated	Brake Type	Standard or Non-Standard	Weight	Pallet Qty.	Master Cyl.	Master Cyl. Assy. Kits	CPLR Repair Kit	Description
4338600	4332900	Drum	STD	20	36	23361	43951	43584	3" Tongue
	4715400	Disc	STD	20	36	47142	15026	43584	3" Tongue

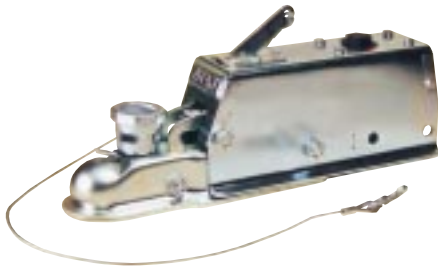
NOTE: For 3" wide trailer tongue.

NOTE: Fits 1 7/8", 50mm and 2" Ball.

NOTE: PRIMED PARTS ARE NON-STANDARD

Model 60 Multi-fit Actuator

6,000 pound capacity, Max. G.V.W.R., 600 pound tongue load
G.V.W.R. limited to ball rating.



Part No. Primed Non-Standard	Part No. Plated	Brake Type	Standard or Non-Standard	Weight	Pallet Qty.	Master Cyl.	Master Cyl. Assy. Kits	CPLR Repair Kit	Description
4339900	4339700	Drum	STD	20	36	23361	43951	40454	3" Tongue
	4745700	Disc	STD	20	36	47142	15026	40454	3" Tongue

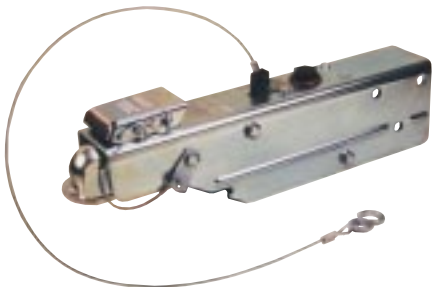
NOTE: For 3" wide trailer tongue.

NOTE: Fits 1 7/8", 50mm and 2" Ball.

NOTE: PRIMED PARTS ARE NON-STANDARD

Aero 6000 Actuator

6,000 pound capacity, Max. G.V.W.R., 600 pound tongue load.

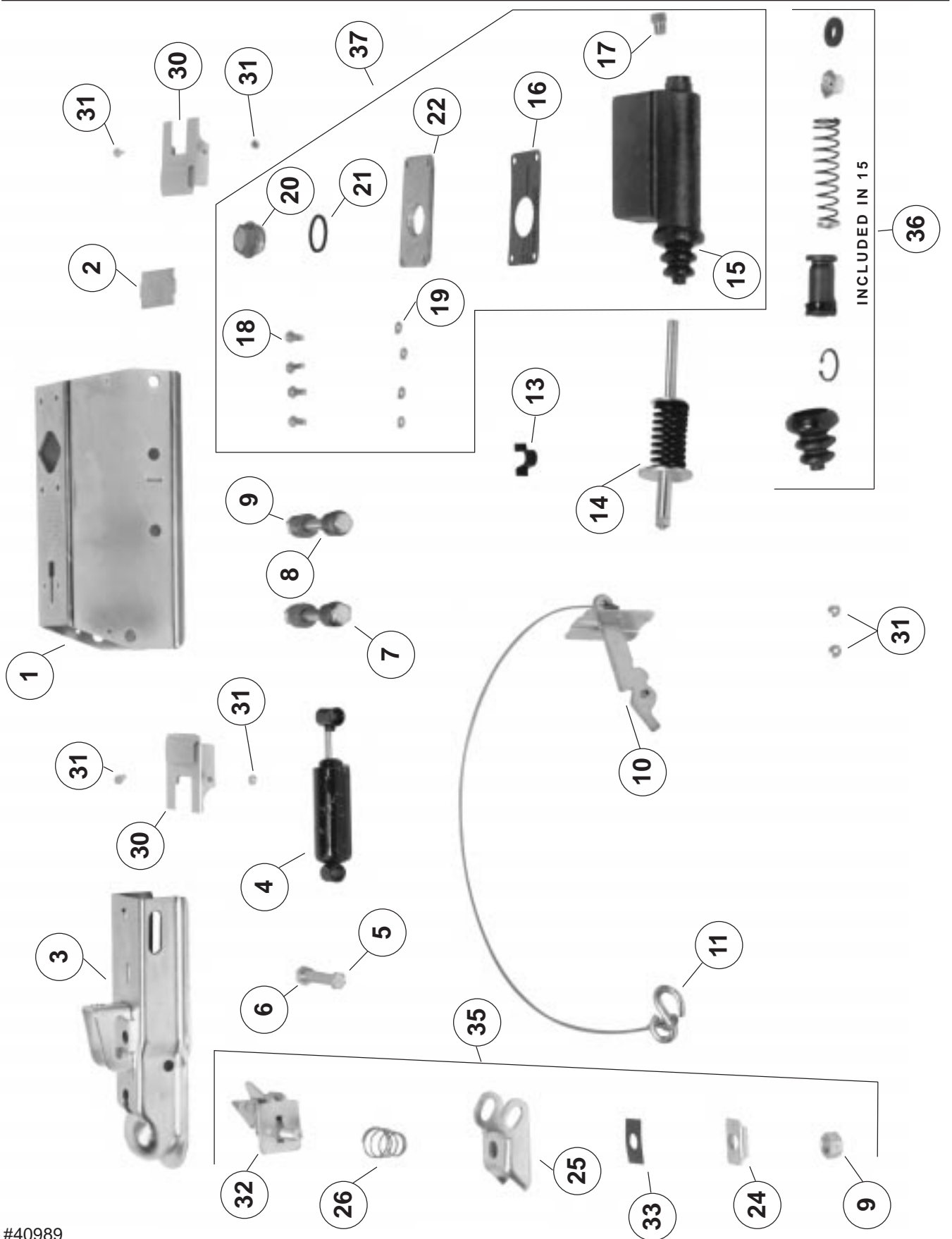


Part No. Primed	Part No. Plated	Brake Type	Standard or Non-Standard	Weight	Pallet Qty.	Master Cyl.	Master Cyl. Assy. Kits	CPLR Repair Kit	Description
	4500600	Drum	STD	24	36	23361	43951		3" Tongue
	4606500	Disc	STD	24	36	47142	15026		3" Tongue

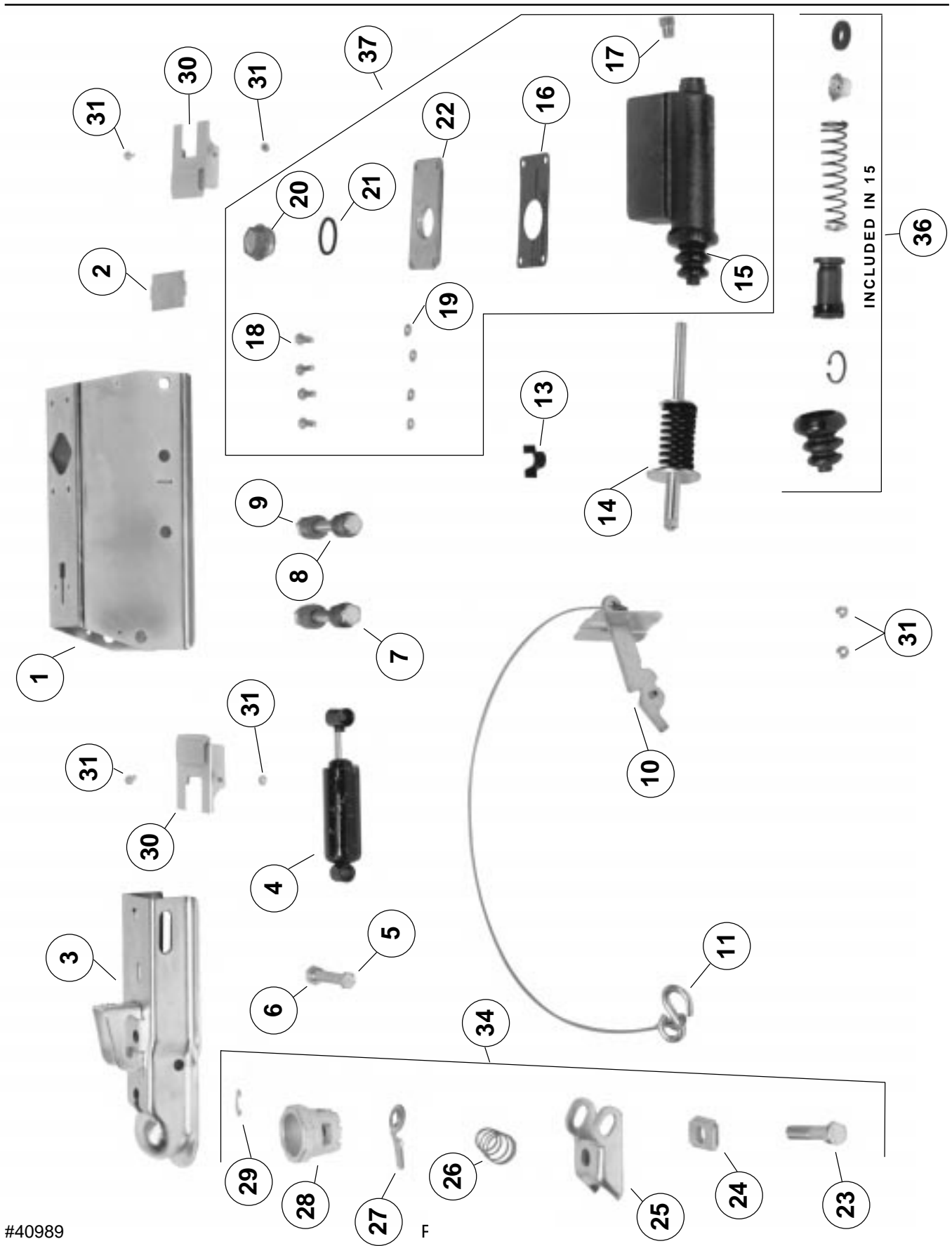
NOTE: Use only with 2" diameter tow ball.

G.V.W.R. limited to that of the ball & hitch being used.

LEVER-LOCK
MODEL 60 ACTUATOR DIAGRAM



MTI
**MULTI-FIT
 MODEL 60 ACTUATOR DIAGRAM**



#40989

(REFER TO DIAGRAMS ON PAGE 23 & 24)

REF. NO.	PART NO.	PART DESCRIPTION	MULTI-FIT MARINE 43397	MULTI-FIT PAINTED 43399	LEVER-LOCK MARINE 43329	LEVER-LOCK PAINTED 43386
1	4324600	Outer case	1		1	
1	4338700	Outer Case		1		1
2	2337700	Strut	1	1	1	1
3	2337800	Coupler Case	1			
3	4097000	Coupler Case		1		
3	4332500	Coupler Case			1	
3	4338800	Coupler Case				1
4	2336200	Shock Absorber	1	1	1	1
5	2339000	Bolt, Hex 7/16 NF X 2-5/8	1	1	1	1
6	2339100	Locknut, Hex 7/16 NF Thin	1	1	1	1
7	2327800	Roller	4	4	4	4
8	2341300	Bolt, Hex 1/2 NF X 3-3/4	2	2	2	2
9	1861200	Locknut, Hex 1/2 NF	2	2	3	3
10	4623800	Break-Away Assy. w/Pin, Cover, S-Hook	1	1	1	1
11	1055500	S-Hook - Included with 46238	1	1	1	1
13	4005200	Break-Away Spring	1	1	1	1
14	2346300	Push Rod Assembly	1	1	1	1
15	2336100	Master Cylinder - Drum Brake	*	1	1	1
15	4715200	Master Cylinder - Disc Brake	*	1	1	1
16	2341400	Gasket	*	1	1	1
17	1209800	Connector, 1-64" Orifice - Drum Brake	*	1	1	1
17	4750300	Connector - Disc Brake	*	1	1	1
18	1050800	Bolt, Hex 1/4 NC X 3/4	*	4	4	4
19	07994000	Lockwasher 1/4	*	4	4	4
20	4480701	Filler Cap, 1-1.4 - 18 NEF PLASTIC	*	1	1	1
21	2338900	Gasket, Filler Cap	*	1	1	1
22	2356600	Cover, Master Cylinder	*	1	1	1
23	2338100	Latch Bolt	1	1		
24	1809000	Lock Plate	1	1	1	1
25	4335800	Ball Latch	1	1	1	1
26	4336800	Spring	1	1	1	1
27	2338300	Hand Wheel Lock	1	1		
28	2420000	Hand Wheel	1	1		
29	2496400	Lock Ring	1	1		
30	245200	Cover, Front	2		2	
30	4097200	Cover, Front		2		2
31	1094100	Screw, Cover	6	6	6	6
32	4358500	Handle Assembly			1	1
33	4334500	Spring Plate			1	1
34	4045400	Multi-Fit Coupler Repair Kit	1	1		
35	4358400	Lever-Lock Coupler Repair Kit			1	1
36	1502600	Master Cylinder Repair Kit	1	1	1	1
37	4395100	Master cylinder Kit (includes * parts)	1	1	1	1

RECOMMENDED TOOLS

Socket and wrench sets
Nut Drivers
Torque wrench

Snap ring pliers
Flat-blade screw driver